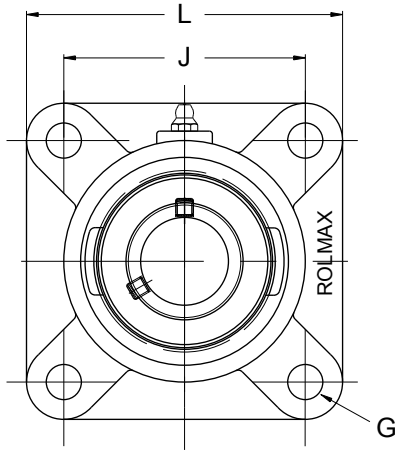
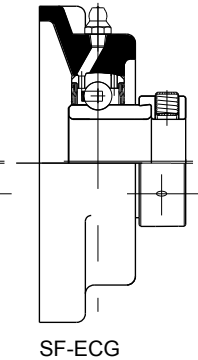
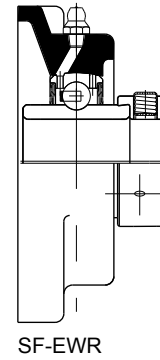
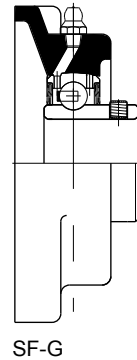
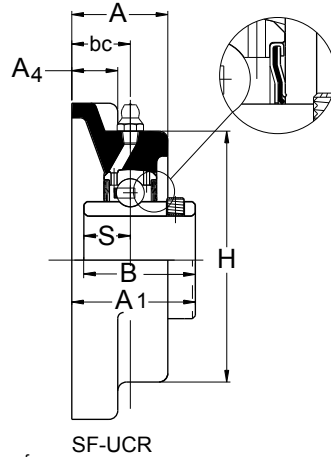


Unidades de Rolamentos com Mancais Tipo Flange SF



diâmetro do parafuso



Diâmetro do eixo		Conjunto	Série do rolamento opcional p/ montagem (+)				Dimensões em milímetros e polegadas										Mancal	Rolamento Base	Peso kg Médio
mm	polegada		UCR	EWR	G	ECG	L	J	H	A ₁	A	A ₄	B	S	G	bc			
20	-	SF-20	+	+	+	+	86	63,50	60	36,76	30,50	14	30,96	12,70	10	18,50	F-2	204 / 1220	0,65
-	3/4	SF-3/4	+	+	+	+	3.386	2.500	2.362	1.447	1.200	0.551	1.219	0.500	3/8	0.728			
25	-	SF-25	+	+	+	+	95	70	70	38,84	31,60	14,10	34,11	14,27	10	19	F-3	205 / 1225	0,85
-	7/8	SF-7/8	+	+	+	+	3.740	2.756	2.756	1.529	1.244	0.555	1.343	0.562	3/8	0.748			
-	15/16	SF-15/16	+	+	+	+											F-4	206 / 1230	1,16
-	1	SF-1	+	+	+	+													
30	-	SF-30	+	+	+	+	108	82,50	82,50	42,22	32,80	15,70	38,10	15,88	10	20	F-5	207 / 1235	1,50
-	1.1/8	SF-1.1/8	+	+	+	+	4.252	3.248	3.248	1.622	1.291	0.618	1.500	0.625	3/8	0.787			
-	1.3/16	SF-1.3/16	+	+	+	+											F-6	208 / 1240	2,14
-	1.1/4	SF-1.1/4	+	+	+	+													
35	-	SF-35	+	+	+	+	117,50	92	95	45,40	33	14,20	42,88	17,48	12	20	F-7	209 / 1245	2,18
-	1.3/8	SF-1.3/8	+	+	+	+	4.626	3.622	3.740	1.787	1.299	0.559	1.688	0.688	1/2	0.787			
-	1.7/16	SF-1.7/16	+	+	+	+											F-8	210 / 1250	2,71
40	-	SF-40	+	+	+	+	130	101,50	108	53,18	37,40	15,20	49,23	19,05	12	23			
-	1.1/2	SF-1.1/2	+	+	+	+	5.118	3.996	4.252	2.093	1.472	0.598	1.938	0.750	1/2	0.905			
45	-	SF-45	+	+	+	+	136,50	105	111	53,18	36,80	15,80	49,23	19,05	16	23	F-9	211	4,02
-	1.5/8	SF-1.5/8	+	+	+	+	5.374	4.134	4.370	2.093	1.448	0.622	1.938	0.750	5/8	0.905			
-	1.11/16	SF-1.11/16	+	+	+	+											F-10	212	4,35
-	1.3/4	SF-1.3/4	+	+	+	+													
50	-	SF-50	+	+	+	+	143	111	116	58,54	43,70	18,30	51,59	19,50	16	26	F-11	214	5,90
-	1.7/8	SF-1.7/8	+	+	+	+	5.630	4.370	4.567	2.304	1.720	0.720	2.031	0.750	5/8	1.024			
-	1.15/16	SF-1.15/16	+	+	+	+											F-12	215	6,90
-	2	SF-2	+	+	+	+													
55	-	SF-55	+	+			162	130	133	62,33	47,70	21,50	55,55	22,22	16	29	F-13	216	6,98
-	2.1/8	SF-2.1/8	+	+			6.378	5.120	5.237	2.453	1.877	0.846	2.187	0.875	5/8	1.142			
-	2.3/16	SF-2.3/16	+	+													F-14	217	8,25
60	-	SF-60	+	+			174,50	143	138	68,17	48	18	65,07	25,40	16	28,50			
-	2.1/4	SF-2.1/4	+	+			6.870	5.630	5.433	2.684	1.890	0.709	2.562	1.000	5/8	1.122			
-	2.3/8	SF-2.3/8	+	+													F-11	214	5,90
-	2.7/16	SF-2.7/16	+	+															
70	-	SF-70	+	+			187	149,22	155	77,87	48,10	18,50	74,63	30,23	16	33,50	F-12	215	6,90
-	2.5/8	SF-2.5/8	+	+			7.363	5.875	6.102	3.065	1.894	0.729	2.938	1.190	5/8	1.319			
-	2.11/16	SF-2.11/16	+	+													F-13	216	6,98
75	-	SF-75	+	+			197	152,40	165	81,07	51,80	23,50	77,77	33,35	20	36,60			
-	2.3/4	SF-2.3/4	+	+			7.756	6.000	6.496	3.192	2.040	0.925	3.062	1.313	3/4	1.441			
-	2.7/8	SF-2.7/8	+	+													F-14	217	8,25
-	2.15/16	SF-2.15/16	+	+															
-	3	SF-3	+	+															
80	-	SF-80	+				197	152,40	171	89,02	55,50	23,50	82,55	33,35	20	39,80	F-13	216	6,98
-	3.3/16	SF-3.3/16	+				7.756	6.000	6.733	3.505	2.185	0.925	3.250	1.313	3/4	1.566			
-	3.1/4	SF-3.1/4	+														F-14	217	8,25
85	-	SF-85	+				214	171,45	184	89,78	54,80	26,50	85,72	34,19	20	38,25			
-	3.3/8	SF-3.3/8	+				8.425	6.750	7.244	3.535	2.158	1.044	3.375	1.346	3/4	1.505			
-	3.7/16	SF-3.7/16	+																